

# Warp Reeling

The objective of the evening was to introduce weavers to the practice of taking colour inspiration from various sources (e.g. nature, dishes, men's ties, paintings, photos etc). Each weaver brought a picture, and a stash of yarns representative of the colours in the picture.

The challenge was to wind the threads around card giving careful attention to the quantity and intensity of each colour in the picture.

The pictures on this website are representative of the members' work that evening. We look forward to the transformation to future warps and finished cloth.

## March 14, 2012 Program

Presenters:  
Catharine Wilson  
Elisabeth Bischof



Gita Ezers



Graham Rayner



Barb Relf



Genevieve Carter





Heather Harkness



Jette Vandermeiden

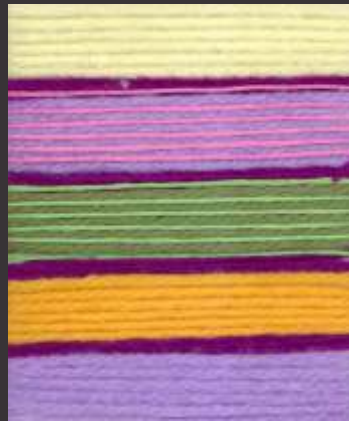


Jean Earl





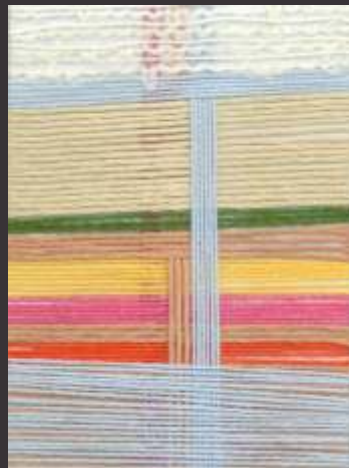
Karen Rayner



Maria Mathus



Marjolein Vercoelen



Libby Hoffman





Nathalia Sugden

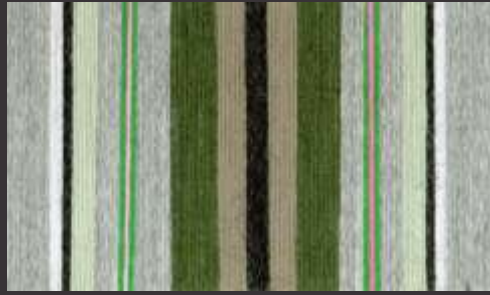


Cheryl Sheridan



Mary Besley





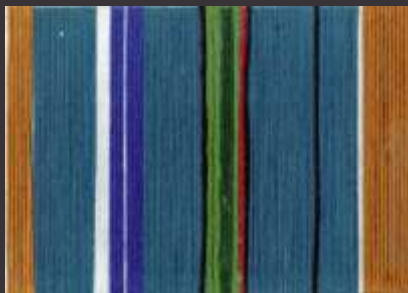
Ronnie Stanley



Sandi Nemenyi



Lyn Egsgard



Sarah Craig

